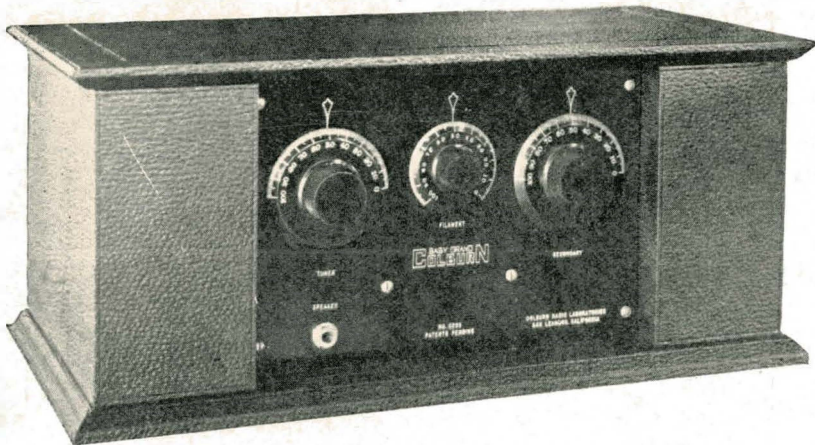


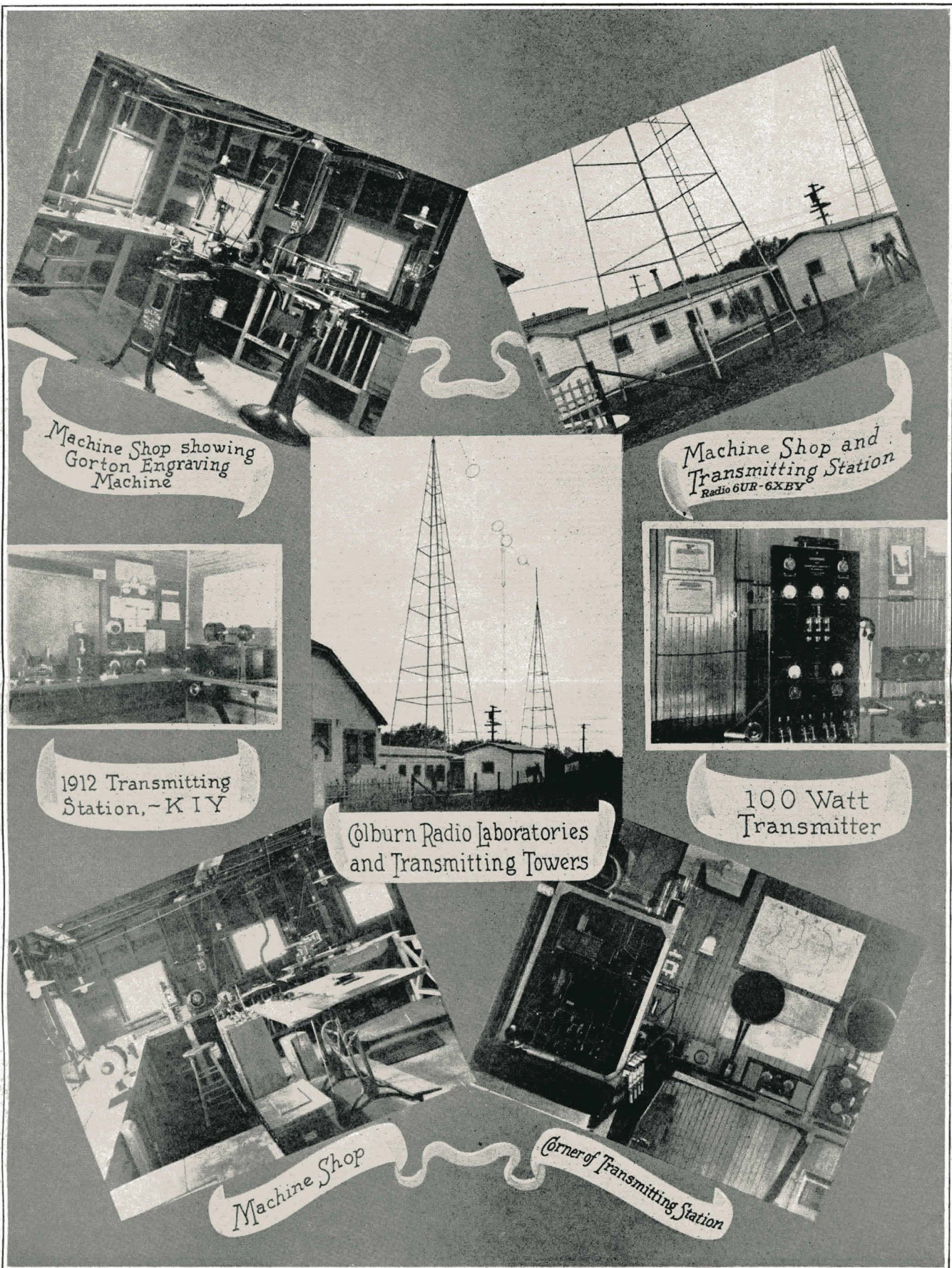


Something New In Radio



The Colburn Baby Grand

Colburn Radio Laboratories
San Leandro, California



Machine Shop showing
Gorton Engraving
Machine

Machine Shop and
Transmitting Station
Radio 6UR-6XBY

1912 Transmitting
Station, ~K I Y

Colburn Radio Laboratories
and Transmitting Towers

100 Watt
Transmitter

Machine Shop

Corner of Transmitting Station

**Complete Laboratory for Testing Radio Apparatus.
Custom Engraving, also Complete Stock of Bakelite Products.**

THE COLBURN BABY GRAND

The Colburn Baby Grand Radio Receiver combines to a marked degree the clear, beautiful tone so rarely found in the more sensitive radio sets, with **great volume and selectivity.**

Your friends will exclaim over the beautiful, round, full tones produced by the Colburn Baby Grand, and they will be equally pleased with the tremendous volume which is available for dancing and for entertainment in large homes, as well as the **ease of control and great selectivity.**

The set may be tuned in by merely adjusting the two dials, which register the same number when set for any given station, and connecting the speaker or phones by means of the plug. The current flowing to the tubes is controlled by the jack, and no other switch is necessary to connect or disconnect the set. Any child can learn to operate the Colburn Baby Grand in a few moments. In point of selectivity the set is very superior, and practically any station may be tuned in or out at will.

Here is good news for the average radio owner. The Colburn Baby Grand receiver will not squeal or howl. And you need not fear complaints of neighbors on account of oscillating tubes. Neither will you be inconvenienced by the crystal detectors so common on other reflex sets. After months of research this bothersome part has been dispensed with without producing howls and other foreign noises.

The general convenience of the set is shown in the fact that it is designed for either UV-199 tubes—there being compartments for both "A" and "B" batteries in the cabinet—or for standard "A" tubes, thus making either a portable receiver or one suitable for home use. The idea of portability is further carried out by the Fabricoid covering of the cabinets, which stands up well under rough usage and looks well with any wood with which your home may be furnished.

Great care has been used in the design and manufacture of the Colburn Baby Grand receiver. as will be seen by looking over the detailed description given below. The set includes three tubes, giving one-stage radio frequency amplification, detector, one-stage audio frequency amplification, reflex and a second stage audio frequency amplification. After much experimental work we have been able to use this hook-up without producing oscillations in any of the tubes. The panel size is only 7 inches by 10 inches. The set is equipped with Benjamin spring sockets to avoid any microphonic noises. Panel and sub-panel are of genuine Bakelite, as are also all dials and knobs. The radio transformers are of novel and exclusive design, and are used only on these sets. Low loss condensers which have no dielectric in the fields are also fitted.

Practically all wire is hidden below the sub-panel, as are the audio frequency transformers, where they are safe from accidental interference.

The cabinet is made of thoroughly dried redwood with non-warping lid, and is covered with black Du Pont Fabricoid. Panel is recessed sufficiently to protect dials.

COLBURN RADIO LABORATORIES

448 Dowling Boulevard

San Leandro, California

Phone San Leandro 605